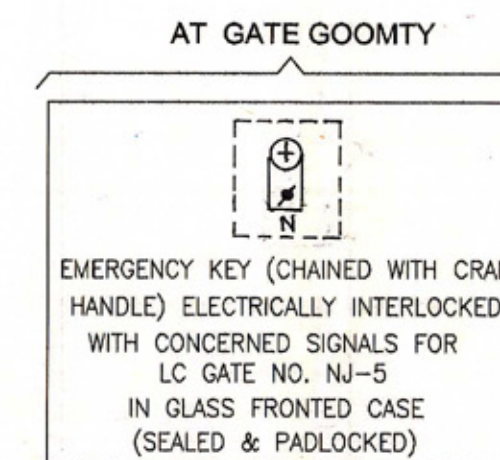


- A) CRS's SPECIFIC APPROVAL TO BE OBTAINED IN TERMS OF PARA 3.40(1) (b) OF G & SR OF N.F. RLY. 2004 EDITION FOR RECKONING THE ADEQUATE DISTANCE**
- AS 120M (MIN) FROM UP STARTER SIG. NO.-S37 TOWARDS DEAD END FOR RECEPTION OF UP TRAIN ON LINE NO.-1 WHEN PTS. NO. 111-112 NORMAL.
  - AS 120M (MIN) FROM UP STARTER SIG. NO.-S39 TOWARDS DEAD END FOR RECEPTION OF UP TRAIN ON LINE NO.-3 WHEN PTS. NO. 113-114 NORMAL.
  - AS 120M (MIN) FROM DN. STARTER SIG. NO.-S12 TOWARDS DEAD END FOR RECEPTION OF DN. TRAIN ON LINE NO.-2 WHEN PTS. NO. 101-102, 103-104 & 105-106 NORMAL.
  - AS 120M (MIN) FROM DN. STARTER SIG. NO.-S14 UP TO DS NO.107X FOR RECEPTION OF DN. TRAIN ON LINE NO.-1 WHEN PTS. NO. 103-104 & 107X NORMAL.
  - AS 120M (MIN) FROM DN. STARTER SIG. NO.-S16 TOWARDS DEAD END FOR RECEPTION OF DN. TRAIN ON LINE NO.-3 WHEN PTS. NO. 101-102 NORMAL.



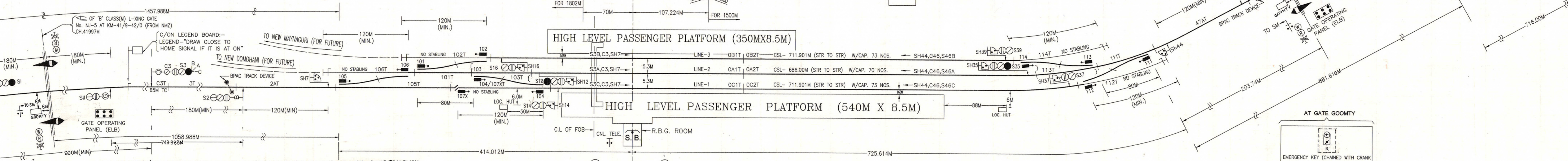
**SIGNAL ASPECT CONTROL CHART**

LINE NO.	SAI	SI	S3	S35	S37	S39	S47
1.	YY	Y	Y	Y	Y	Y	G
2.	YY	Y	Y	U	Y	Y	G
3.	YY	Y	Y	U	Y	Y	G



**SIGNAL ASPECT CONTROL CHART**

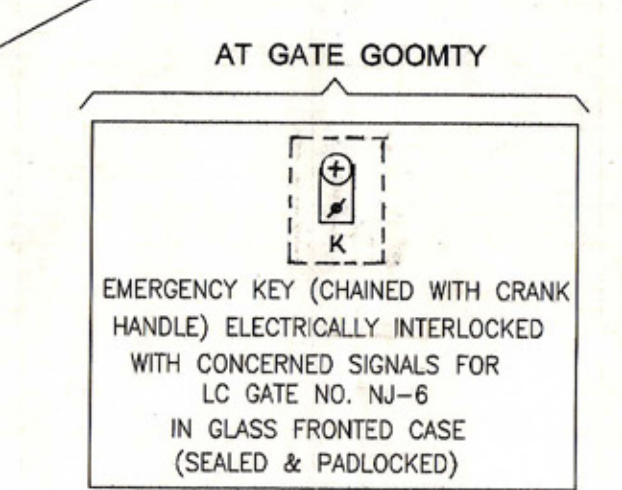
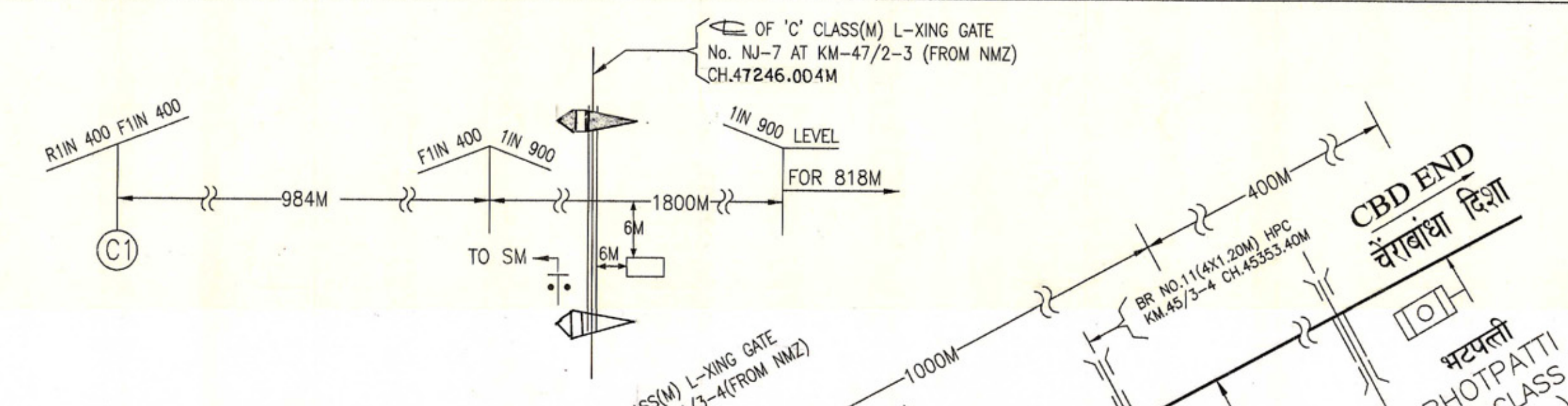
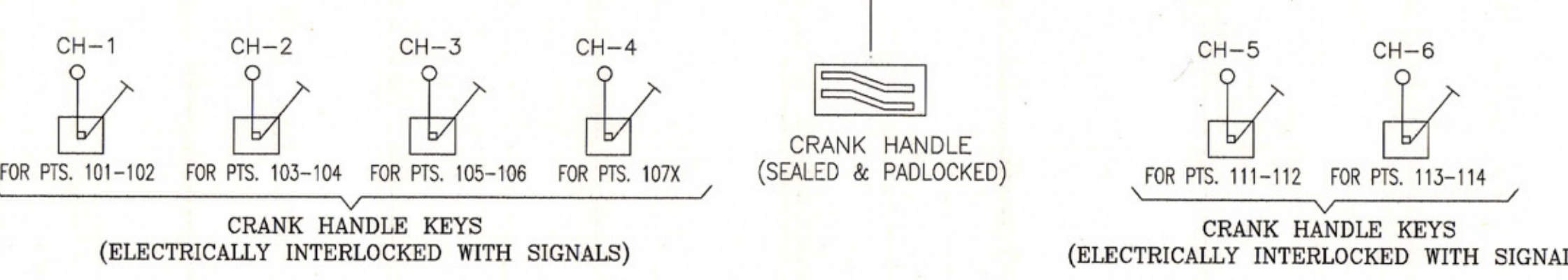
LINE NO.	SII	S2	S16	S14	S12	S46	DD
1.	G	G	Y	Y	Y	Y	U
2.	G	G	Y	Y	Y	Y	Y
3.	G	G	Y	Y	Y	Y	Y



f. AS 120M (MIN) FROM DN. STARTER SIG. NO.-S16 TOWARDS DEAD END OF LINE NO.2 FOR RECEPTION OF DN. TRAIN ON LINE NO.-3 WHEN PTS. NO.105-106 NORMAL & 101-102 REVERSE.

**B) CRS's SPECIFIC APPROVAL TO BE OBTAINED IN TERMS OF G.R PARA 3.07(7) OF G & SR 2004 EDITION OF N.F. RAILWAY FOR COMBINING:-**

- DN. GATE DISTANT SIGNAL IN REAR OF GATE STOP SIGNAL NO.SII OF L.C. GATE NO. NJ-5 WITH DN. ADV. STARTER SIGNAL NO. S2
- UP DISTANT SIGNAL IN REAR OF UP HOME SIG. NO. S3 WITH UP GATE SIG. NO. SI OF L.C. GATE NO. NJ-5.



CTP/MMLG  
CSTE/PL

- DEAD APPROACH LOCKING WITH 30 SEC. TIME DELAY PROVIDED FOR L.C. GATE NO. NJ-5.
- ELECTRICALLY OPERATED LIFTING BARRIER AND WARNING BELL/HOOTER PROVIDED AT L.C. GATE NOS. NJ-5 & NJ-6.

**टिप्पणी NOTES**

SCOPE OF WORK	NEW MAL JN - CHANGRABANDHA GAUGE CONVERSION PROJECT
मिस्त्रिल सं	B.G.
गज	II (R).
अनपेक्षित का मानक	II (R).
स्टेशन का वर्ग	'B'
विचलन	AS LISTED
इंजी योजना के अनुसार	CE/Y/13/2012(PH-II) ALT.1
सिगनल योजना का स्थान लेना	SG(SI)2075/1(PHASE)

DRY	CSTE/CON	ALT	REF.	DESCRIPTION	CSTE/CON
APPROVED					
<b>मैनागुरी रोड</b>					
<b>MAYNAGURI ROAD</b>					
<b>SIGNALING PLAN (E.I.)</b>					
मंडल			DRG. NO. नक्शा सं		
अलीपुरद्वार			SG (SI) 2075/2		
DIVISION			SCALE		
ALIPURDUAR			SCALE		
पूर्वोत्तर सीमा रेलवे संकेत एवं दूरसंचार विभाग					
NORTHEAST FRONTIER RAILWAY - SIGNAL AND TELECOMMUNICATION DEPARTMENT.					